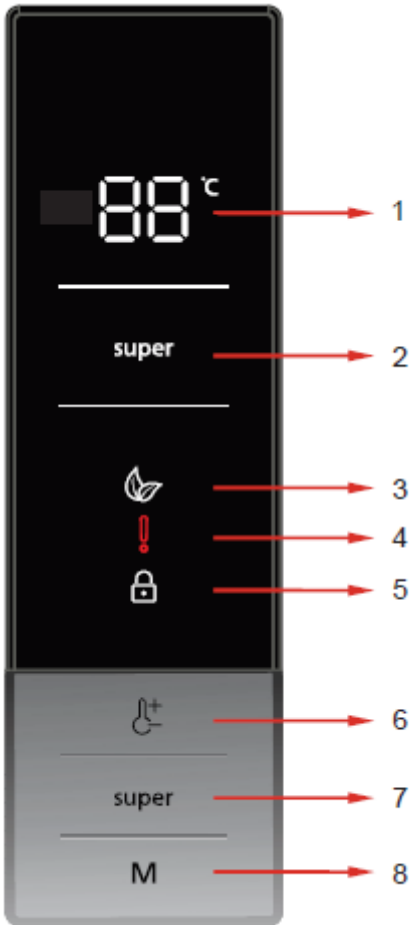


### Display and control panel



#### Use of control panel

1. It is cooler set value screen.
2. It is super cooling indicator.
3. It is economy mode symbol.
4. It is alarm symbol
5. It is child-lock symbol
6. It enables the setting value of cooler to be modified if desired. Cooler maybe set to 8, 6, 5, 4, 2°C,
7. It enables the super mode.
8. It enables the economy mode .

### Super Cool Mode



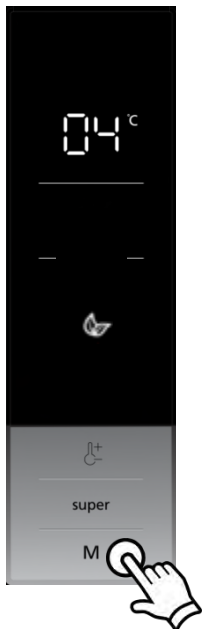
#### How would it be used?

- Press super button until «super» symbol will be seen on the screen. Buzzer will sound beep beep. Mode will be set.
- «super» symbol will light during the mode.

#### During this mode:

- • Super cool mode can be cancelled by the same operation of selecting.

### Economy Mode



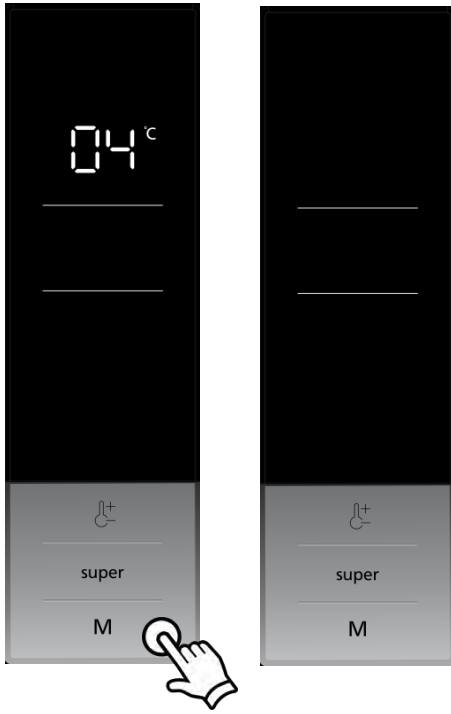
#### How would it be used?

- Push "mode button" until «economy» symbol will be seen on the screen..
- If no pressed any button for 1 sec. Mode will be set.
- Cooler temperature segments will show "E".

#### • During this mode:

- Cooler may be adjusted. When economy mode will be cancelled, the selected setting values will proceed.
- Super cool mode can be selected. Economy mode is automatically cancelled and the selected mode is activated.
- To cancel, you will just need to press on mode button.

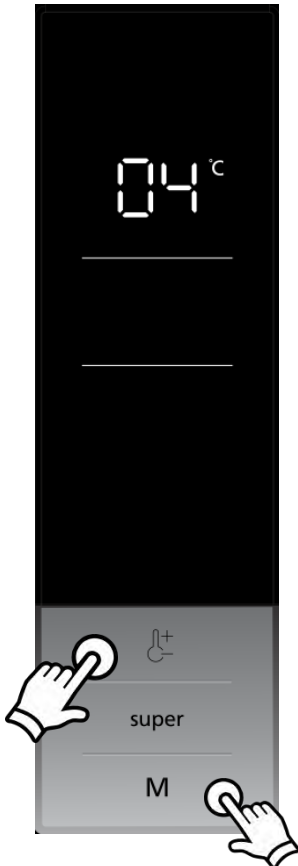
### Screen Saver Mode



#### How to use?

- This mode will be activated when you press on mode button for 5 seconds.
- If pressed on no button in 5 seconds when the mode is active, lights of the control panel will go off.
- If you press any button when lights of control panel are off, the current settings will appear on the screen, and then you can make the adjustment as you want. If you neither cancel screen saver mode nor press on any button in 5 seconds, the control panel will go off again.
- To cancel screen saver mode press on mute button for 5 seconds again.
- When screen saver mode is active you can also activate child lock.
- If you do not press any button for 5 seconds after activating child lock, the lights of the control panel will go off. Then, you can view the previous settings and that child lock symbol is active when you press any button, and you can cancel child lock as is described in the instruction of that mode.

### Demo Mode



This mode will be used for only sales points by salesman to show functions & modes to customer without operating components as a compressor, fan, motor..Etc.

#### Entering Demo mode:

Firstly the power is on, secondly within 1 minute user will push Mode and Cooler Set Button 3 seconds at the same time, Then appliance will go on "demo function". «dE» will light on cooler set value screen for 1 second, and «on» will light for 1 second and off. Every 20 seconds this operations will occur. All functions can be adjusted to show how they are adjusted to the customer.

#### Canceling Demo mode:

For cancelling; Same operation will be used. If user will push Mode and Cooler Set Button at the same time, demo function will be cancelled.

When appliance is Demo mode; if plug is removed or there is an electricity breakdown; demo mode will continue with current settings after user plug into or electricity breakdown finish.



## 375E IMD DISPLAY



### Display and control panel

- It is not recommended that you operate your fridge in environments colder than 10°C in terms of its efficiency.
- Temperature adjustments should be made according to the frequency of door openings and the quantity of food kept inside the fridge.
- Do not pass to another adjustment before completing an adjustment.
- Your fridge should be operated up to 24 hours according to the ambient temperature without interruption after being plugged in to be completely cooled. Do not open doors of your fridge frequently and do not place much food inside it in this period.
- A 5 minute delaying function is applied to prevent damage to the compressor of your fridge, when you take the plug off and then plug it on again to operate it or when an energy breakdown occurs. Your fridge will start to operate normally after 5 minutes.
- Your fridge is designed to operate in the ambient temperature intervals stated in the standards, according to the climate class stated in the information label. We do not recommend operating your fridge out of stated temperatures value limits in terms of cooling effectiveness.

Climate Class	Ambient (°C)
T	16 to 43
ST	16 to 38
N	16 to 32
SN	10 to 32



## 375E IMD DISPLAY



### SPECIAL PROGRAMS

#### Low voltage function

Cooler number segment shows «--», buzzer sounds.

#### \* **Cooler sensor open short circuit**

Blink Sr Symbol, buzzer sounds.

#### \* **Defrost sensor open short circuit**

In normal mode, RDS sensor defect will not be shown.

#### \* **Ambient sensor open short circuit**

In normal mode, AT sensor defect will not be shown.

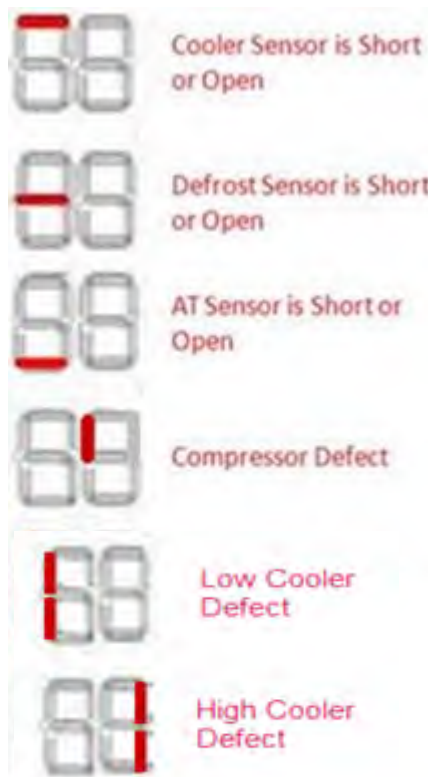
#### \* **Compressor defect**

Blink Sr Symbol, buzzer sounds.

#### \* **Door open alarm**

Door alarm sounds when the door opens more than 2 minutes continuously.

### INFORMATION SCREEN



**Entering Service Mode:** Push and hold Super and Mode button together for 5 seconds. When user enters to Service Mode,

#### **In Service Mode;**

##### **First Push of Mode Button;**

This mode is starting mode. All components run in order.

“6” will light when R&Su heater will be ON

“3” will light when Fan is ON

“1” will light when compressor is ON

##### **Second Push of Mode Button;**

Service man can see actual temperatures on this screen. The sensor values are indicated in the following order;

RDS-AT-COOLER

With cooler set button, service man can toggle between sensor values.

##### **Third Push of Mode Button;**

Service man can see door open close position on this mode. So, service man can check door switch working or not.

If door is open, «ON» will be seen on set value screen, if door is close, «OF» will be seen on set value screen.



## 375E IMD DISPLAY



### USER AND SERVICE MODE ERROR MESSAGES

#### Low voltage error on display

DEFECT TYPE	DETAILS	USER MODE REACTION	SERVICE MODE REACTION
Low voltage	Power supply < 170	Cooler number segment shows « - - »	-

#### Cooling error on display

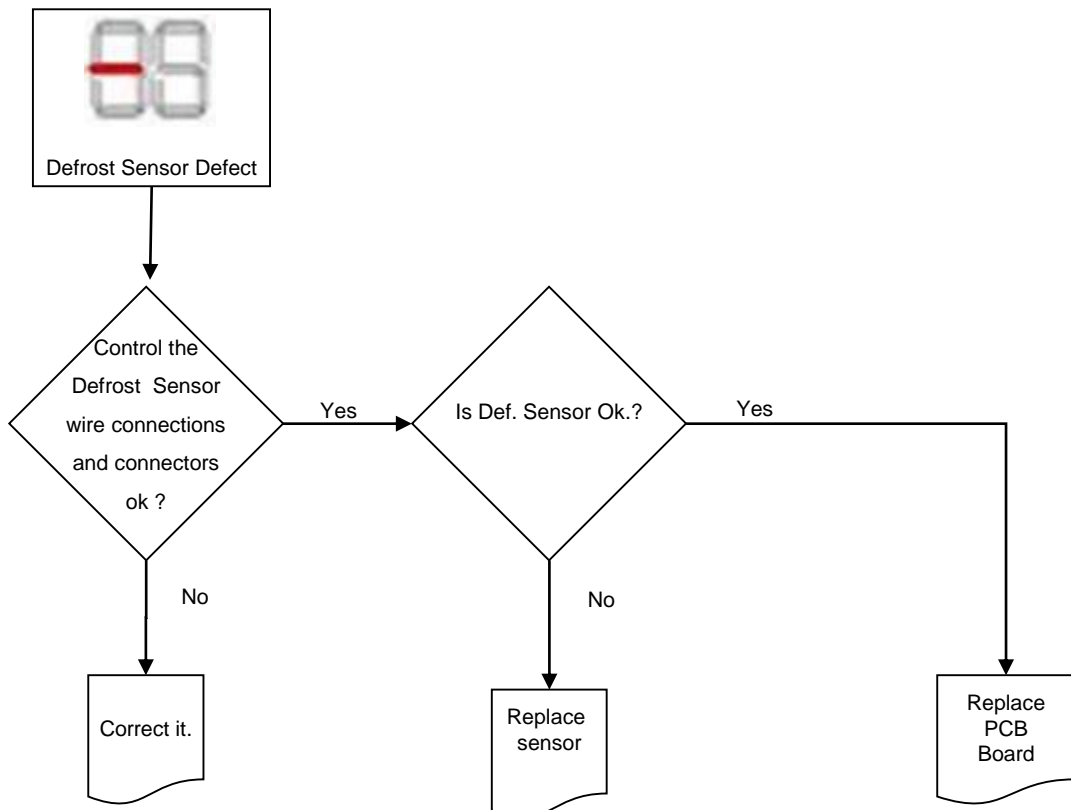
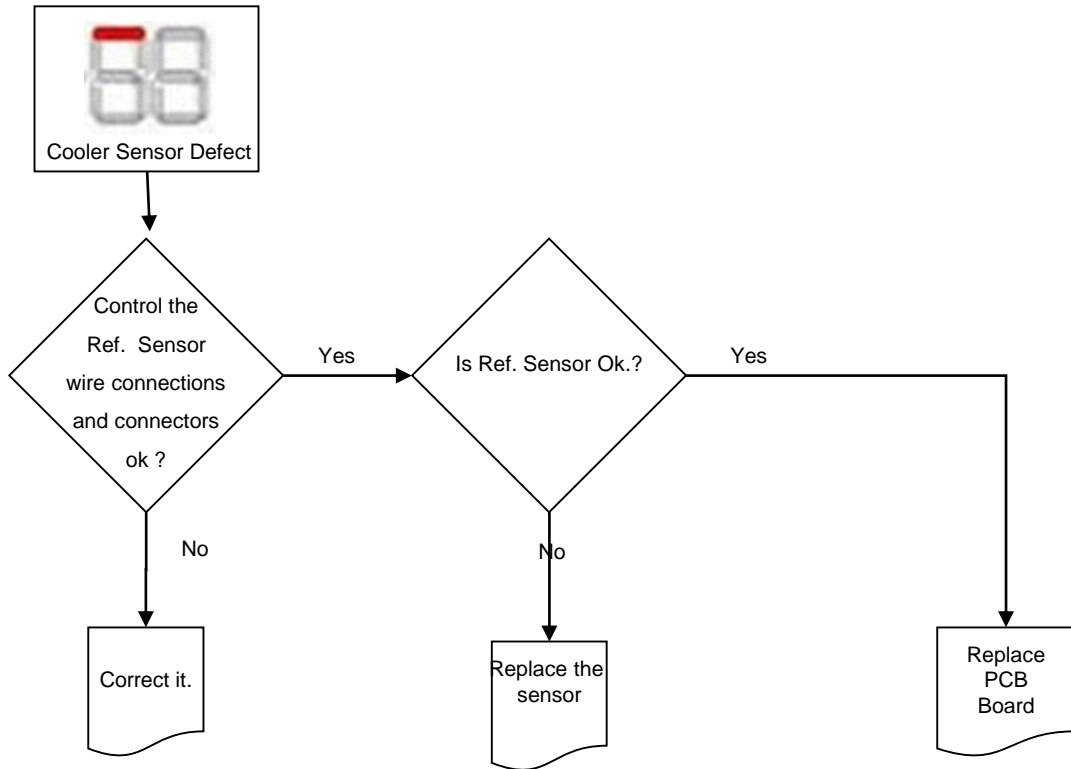
**NOTE:** To prevent the wrong alarms, this alarm status is disabled on following conditions:

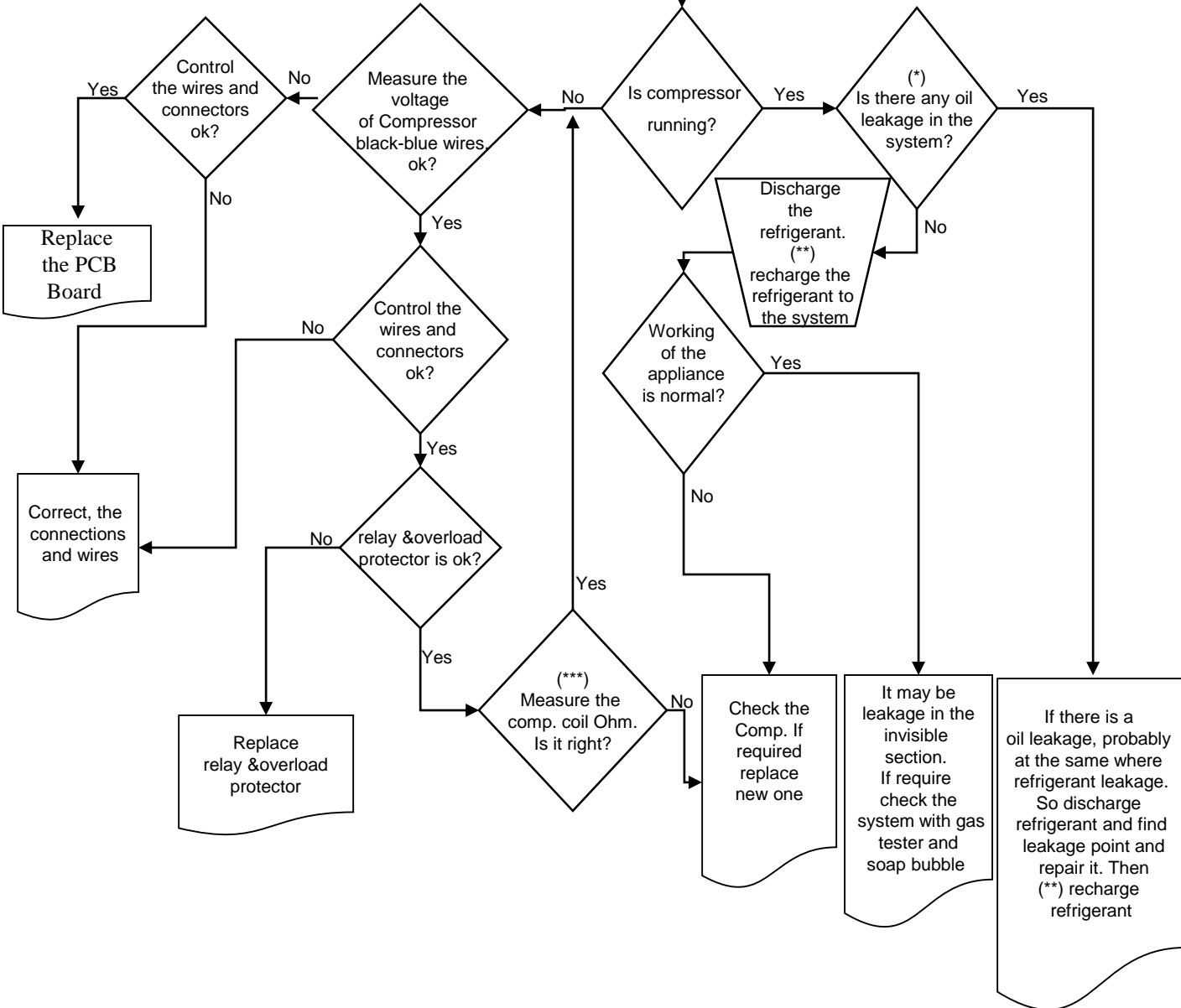
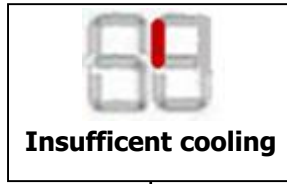
- During the first 6 hours after the product was firstly connected.
- During the defrost period
- During the first two hours after a defrost
- During the first 2 hours that one of the doors was open.

DEFECT TYPE	DETAILS	USER MODE REACTION
Ref. sensor > +15°C	Refrigerator compartment is warm	Sr will be shown until error finishes On Cooler Set Value Screen
Ref. sensor < -5°C	Refrigerator compartment is so cool	Sr will be shown until error finishes On Cooler Set Value Screen

#### PRIORITY OF ERROR ON DISPLAY

	USER MODE REACTION	SERVICE MODE REACTION
Compressor Defect	SR	
Sensor Defect (Short-Open)	SR	Cooler Sensor is Short or Open Defrost Sensor is Short or Open AT Sensor is Short or Open
R sensor > 15°C	LC	
R sensor < -5°C	HC	





(\*) Check all of the visible pipes and welding points against oil leakage

(\*\*) Before recharging the refrigerant to the system; Dryer must be replaced and at least 30 minutes vacuum must be done

(\*\*\*) Comp. Main coil and auxiliary coil are 10 Ω and 22 Ω respectively (At 25 °C ambient temp.)



## 375E IMD DISPLAY



### User and Service Mode Error Message

**After January 2020**

#### Sensor Faults;

SENSOR	FREEZER SET VALUE	COOLER SET VALUE
(2) Refrigerator (Short-Open)	E	02
(4) AT sensor	E	04
(5) RDH Sensor	E	05

#### Component defect on display

DEFECT TYPE	FREEZER SET VALUE	COOLER SET VALUE
Compressor Defect	E	06

#### Low voltage error on display

DEFECT TYPE	FREEZER SET VALUE	COOLER SET VALUE
Low voltage	E	08

#### Cooling error on display

DEFECT TYPE	FREEZER SET VALUE	COOLER SET VALUE
LC (Low Cool.)	E	10
HC (High Cool.)	E	11

1. Hold the top hinge cover and remove it toward that direction (Picture-1)



Picture-1

2. Unscrew the screws fixing the top hinge and remove it. (Picture-2)



Picture-2

3. Displace the door (Picture-3)



Picture-3

4. Unscrew the adjustable foot (Picture-4)



Picture-4

5. Unscrew the bottom hinge screws. (Picture-5)



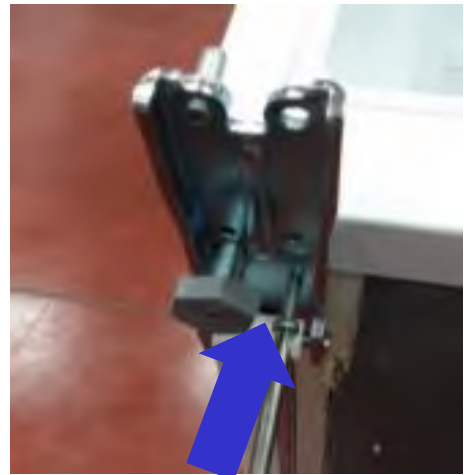
Picture-5

6. Unscrew the bottom hinge pin and screw it to other hole. (Picture-6)



Picture-6

7. Screw the bottom hinge to the left bottom side of refrigerator. Screw the adjustable foot there. (Picture-7)



Picture-7

8. Unscrew the two screws fixing stopper and stopper support plate under the door. After that screw the other side. (Picture-8)



Picture-8

9. Remove the socket cover-right of the door (Picture-9.1)

Remove the display socket (Picture-9.2)

Please use the socket cover to hidden other housing (Picture-9.3 / Picture-9.4)



Picture-9.1



Picture-9.2



Picture-9.3



Picture-9.4

10. Remove the hinge cover on the top panel and replace to other side.(Picture-10)



Picture-10

**11.** Place the door to the bottom hinge and screw the top hinge to the top panel. (Picture-11)



**Picture-11**

**12.** Place the top hinge cover. (Picture-12)



**Picture-12**



**Warning: The plug must be pulled out before the display is removed.**

1. Display can be removed with the disassembly tool. Do not use any sharp objects to remove the display.
2. Disassembly tool code is **42152193** (Picture-1)



**Picture-1**

3. Place and fix the disassembly tool on to display and pull to take out the display. (Picture-2)

4. Take out the display cable socket. (Picture-3)



**Picture-2**



**Picture-3**

### Side Led Version

1. Stick a tape to protect plastic. Insert a flat screwdriver into the gap and remove the cover. (Pic-1)



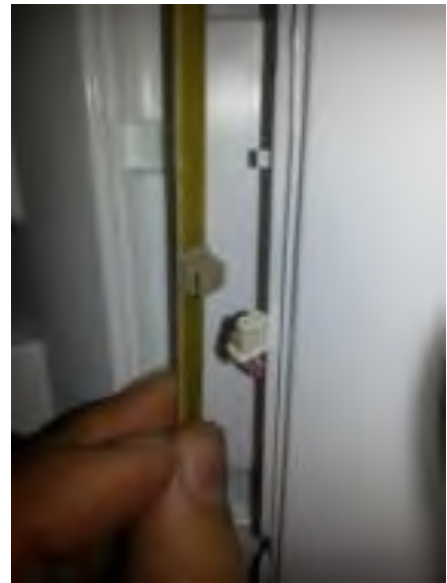
Picture-1

2. Remove the led strip light from its housing. (Pic-2)



Picture-2

3. Disconnect the connector and change the led light strip. (Pic-3)



Picture-3

4. First, place the bottom point of the led light strip and then place towards other side.(Pic-4)



Picture-4

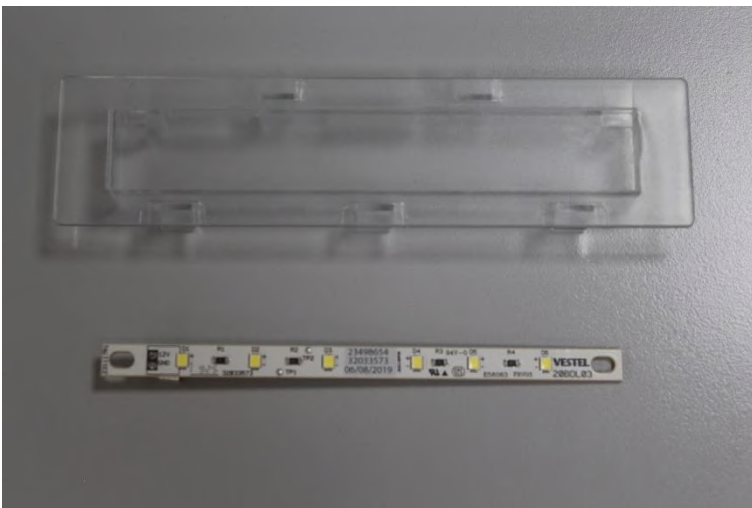
5. Reassemble the led cover. (Pic-5)



Picture-5

### Top Led Version

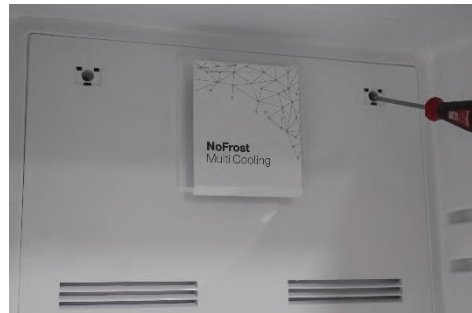
Remove the led cover by pulling forward and disconnect the connector.



Remove the cooler glass shelves and the chiller.



Remove the screw caps by using a flat screwdriver and screw the screws.



Flex the multi flow by holding the fan cover and remove it.  
Disconnect the connector after removing the multi flow.



1. You can remove the fan cover by flexing the fan cover nails
2. Remove the fan motor by flexing the fan motor rubbers. (Picture-1 / Picture-2 / Picture-3)



Picture-1



Picture-2



Picture-3

3. Attach the rubbers to the fan motor and montage the fan motor in the air duct with the help of rubber. Place the 2 nails under the fan cover ve assemble by flexing the top nail (Picture-4 / Picture-5 / Picture-6)

\*: Fan Motor cable output must be **RIGHT-CORNER** when viewed from the front of the part

4. After attaching in the socket, place the part and secure the air duct by screwing.



Picture-4



Picture-5



Picture-6

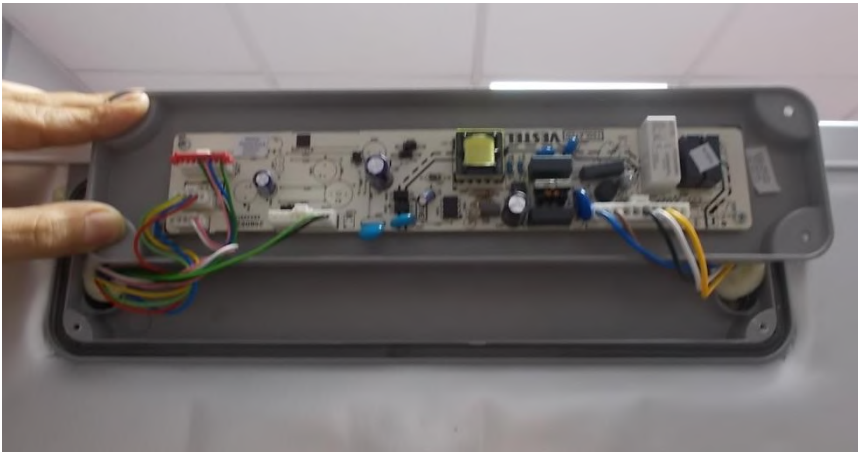
 **Warning: The plug must be pulled out before the mainboard group is removed.**

1. Unscrew the screws which are fixing the main board cover. (Picture-1)



**Picture-1**

2. Pull the mainboard slightly forward and disconnect all the connectors and then replace it. Finally, place the mainboard cover and screw it. (Picture-2)



**Picture-2**

## ASSEMBLE & DISASSEMBLE SENSOR

Remove the freezer sensor cover by pulling forward and disconnect sensor connector.  
(Picture-1 / Picture-2)



Picture-1



Picture-2



***Warning: Pay attention not to damage to the sensor cover details!***



# 375E IMD DISPLAY



## Barcode and Serial Number Explanation:

Vestel refrigerator serial numbers are consist of 22 digits.

